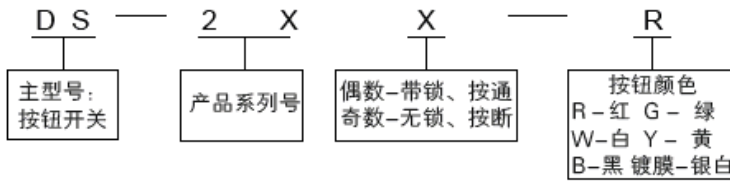


型号说明



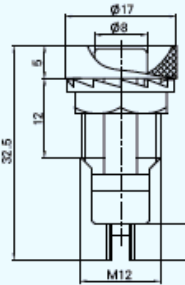
▲材料:
 外 壳: PC或PA6
 基 座: 酚醛塑料(胶木)
 按 钮: ABS
 触 点: 铜镀银
 接线端子: 铜镀银

该系列开关适用于各种电气设备中转换电路。具有造型美观、性能可靠、防震性能好、寿命长等特点。

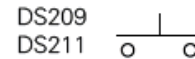
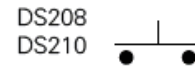
▲主要技术参数

| 额定电压/电流 | 介电强度 | 接触电阻 | 耐久性(寿命) | 环境温度 |
|-----------|------------------|---------|------------------------|-------------|
| 250VAC/1A | 1500VAC50Hz/1min | ≤0.02 Ω | 带锁>20000次 无锁>50000次 | -40℃ - +85℃ |

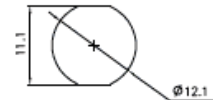
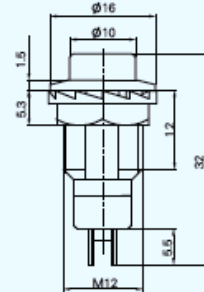
DS208 带锁 OFF-ON 2P
 DS209 无锁 OFF-(ON) 2P



电路图

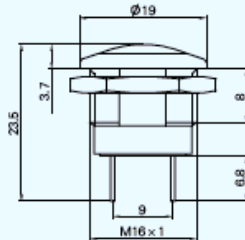


DS210 带锁 OFF-ON 2P
 DS211 无锁 OFF-(ON) 2P

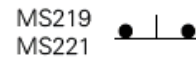
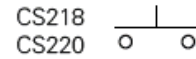


安装孔

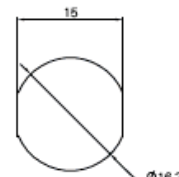
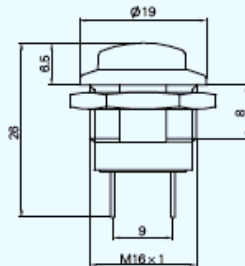
CS218 接通 OFF-(ON) 2P
 MS219 按断 ON-(OFF) 2P



电路图



CS220 接通 OFF-(ON) 2P
 MS221 按断 ON-(OFF) 2P



安装孔